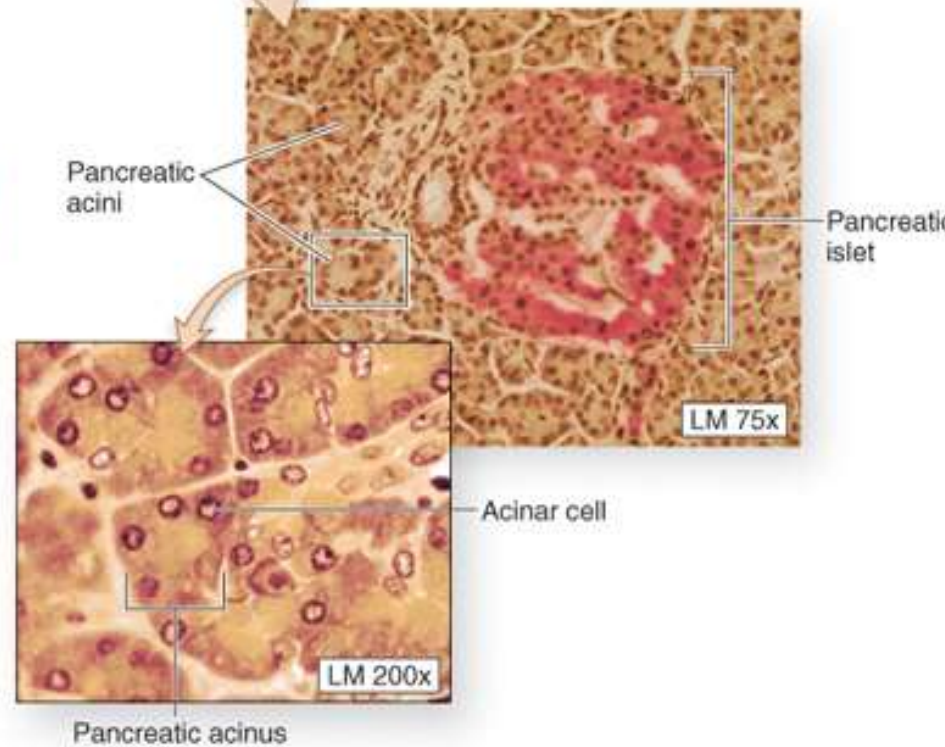
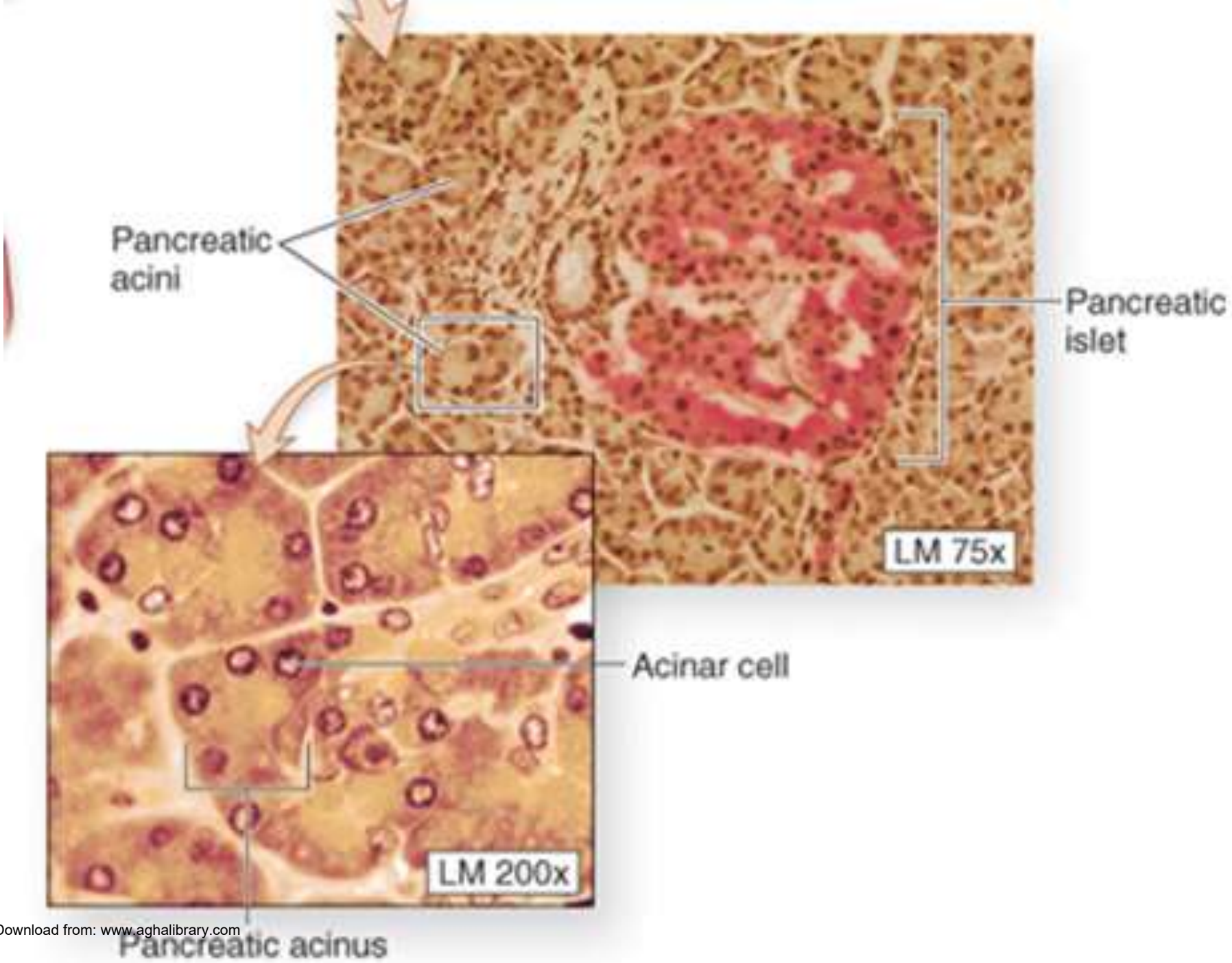


(a)



(b)



Pancreatic acini

Pancreatic islet

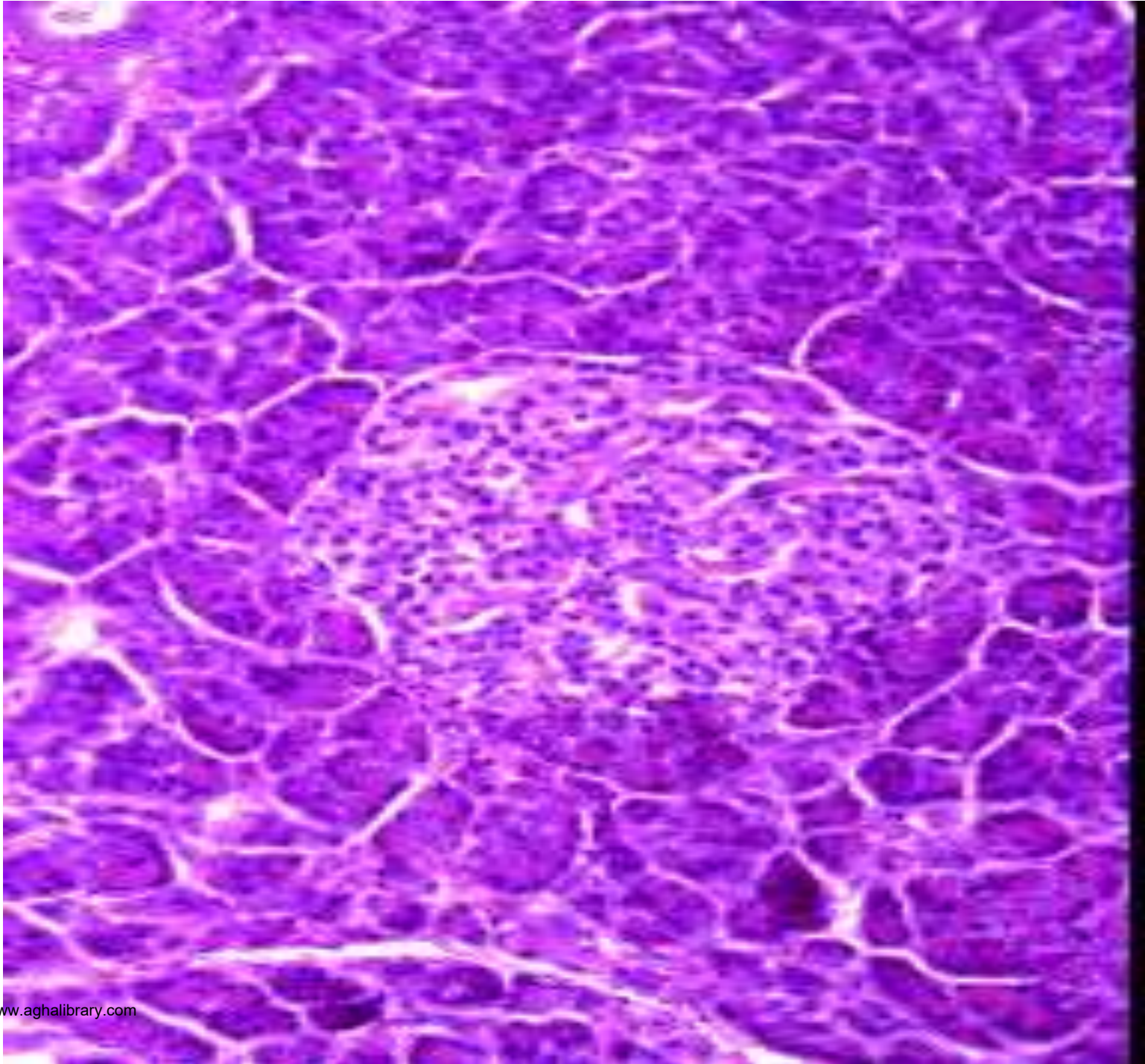
LM 75x

Acinar cell

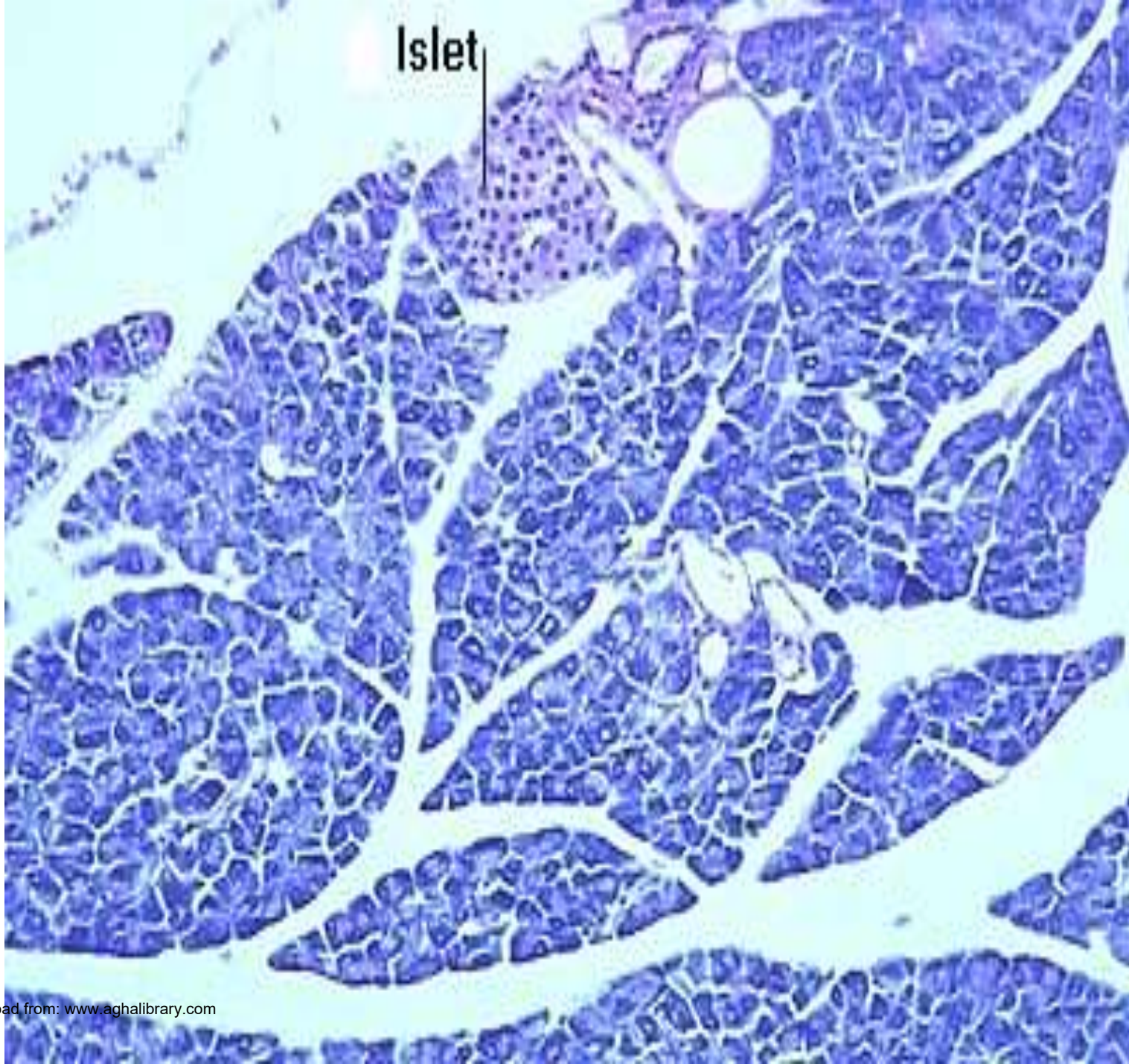
LM 200x

Pancreatic acinus

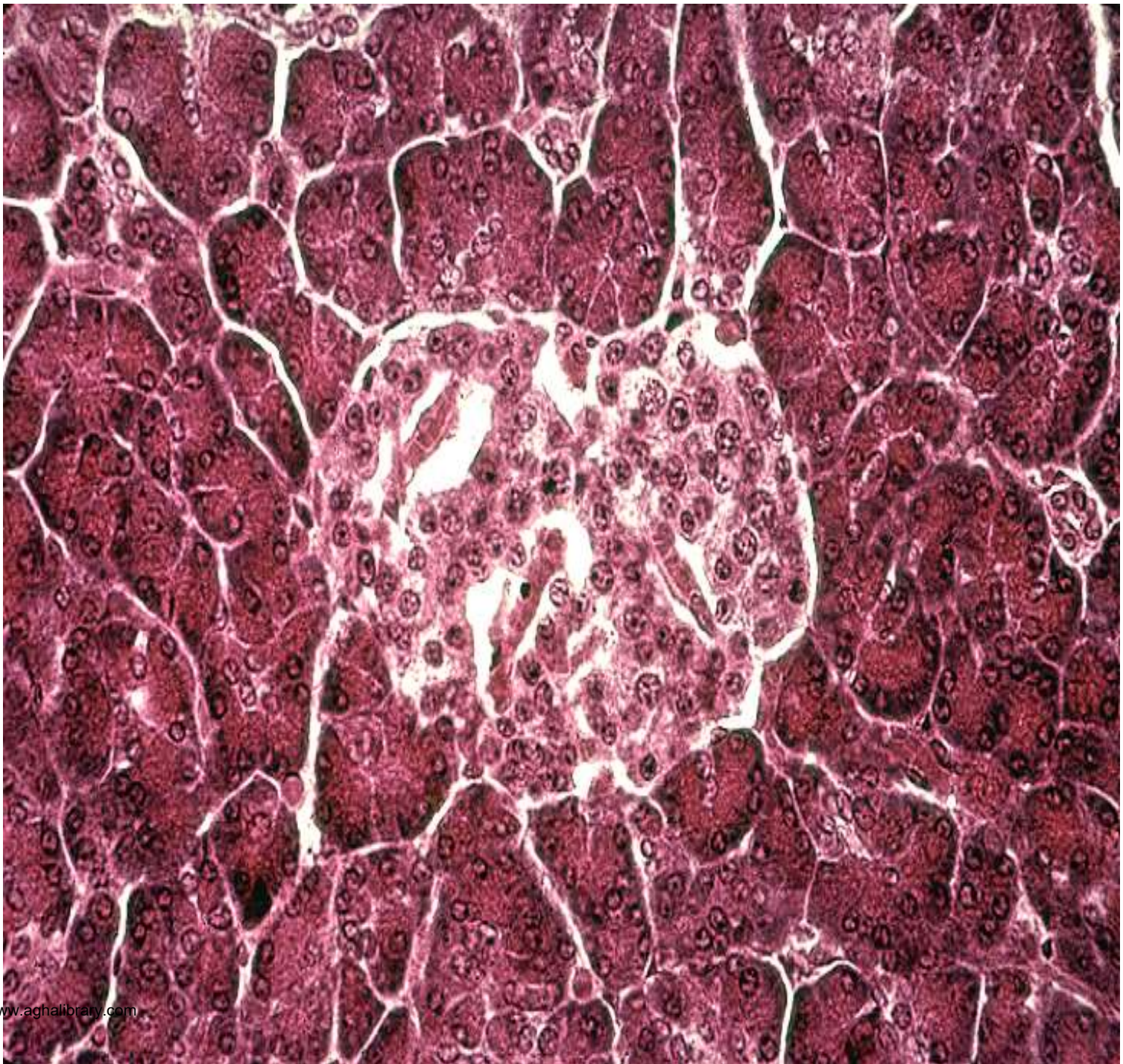




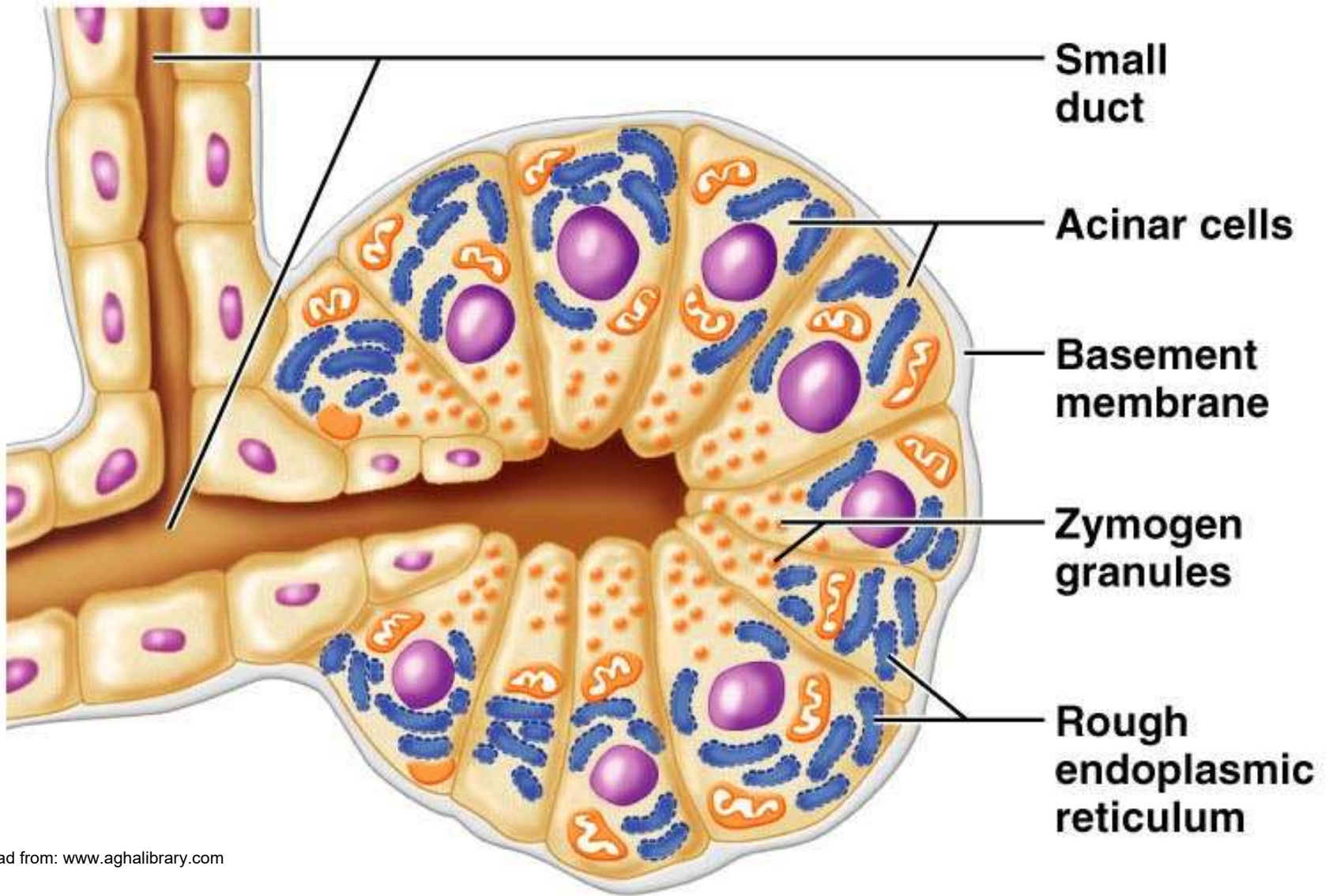




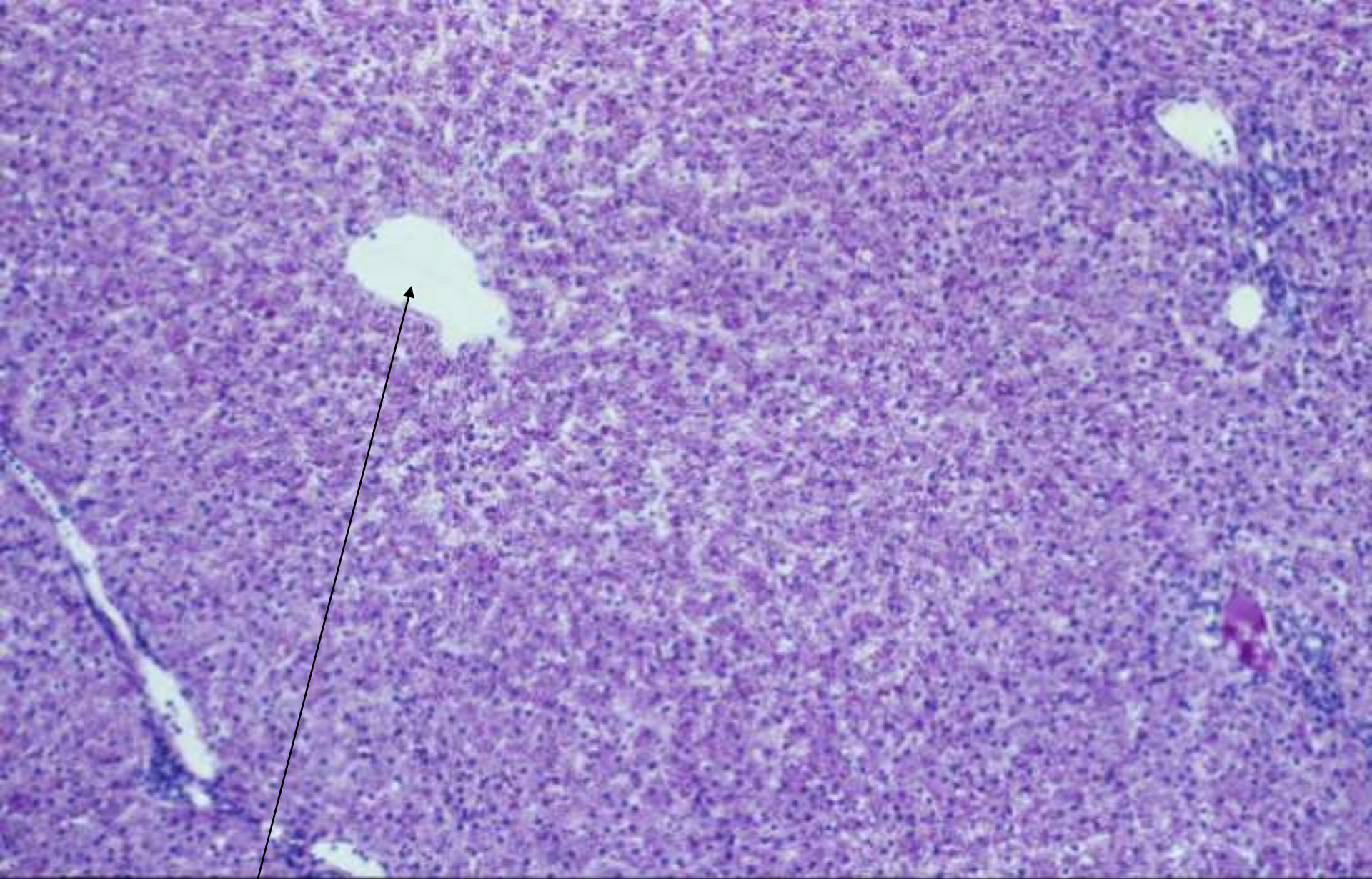








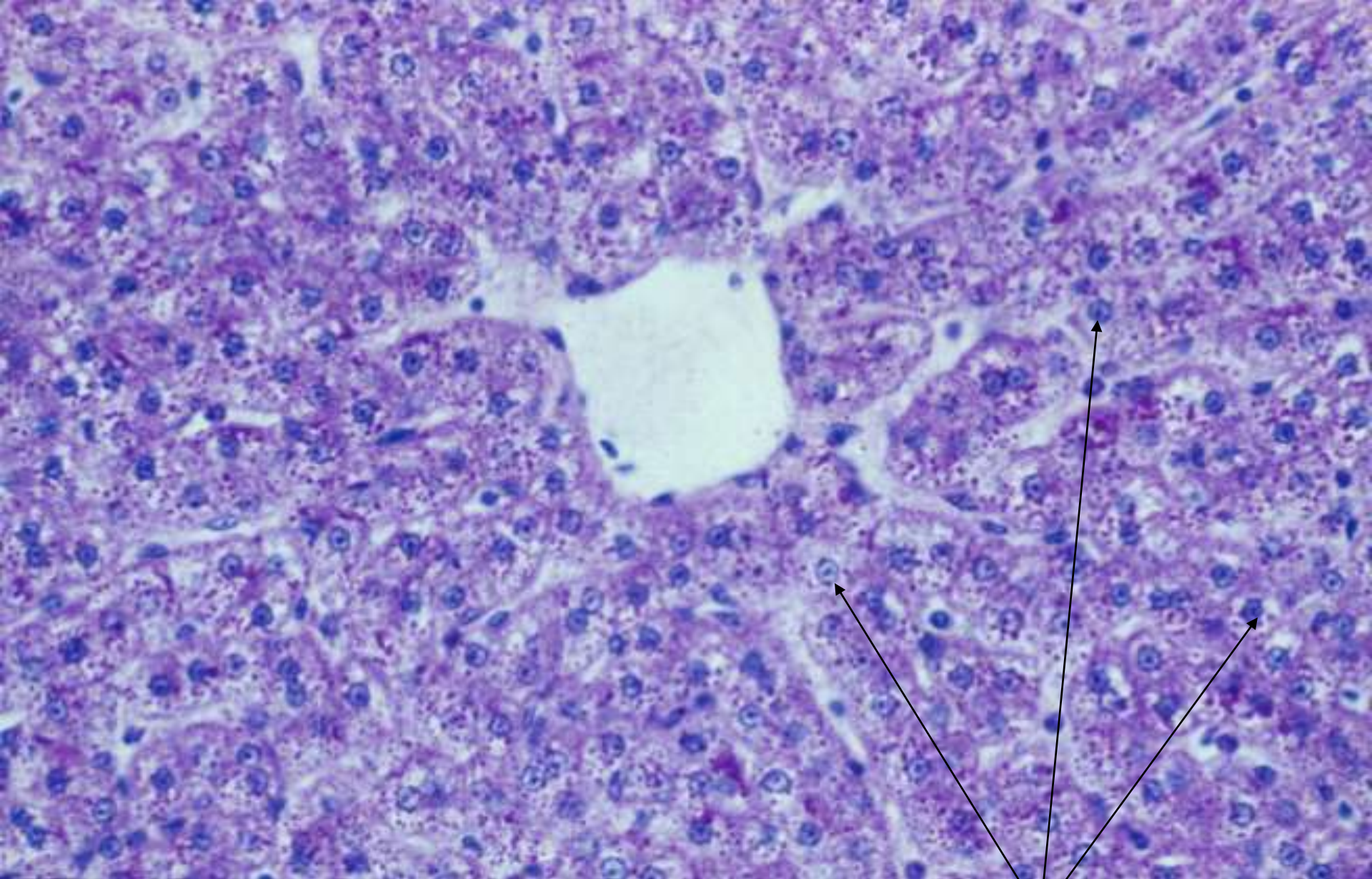




**Central vein**

**Liver Lobule**

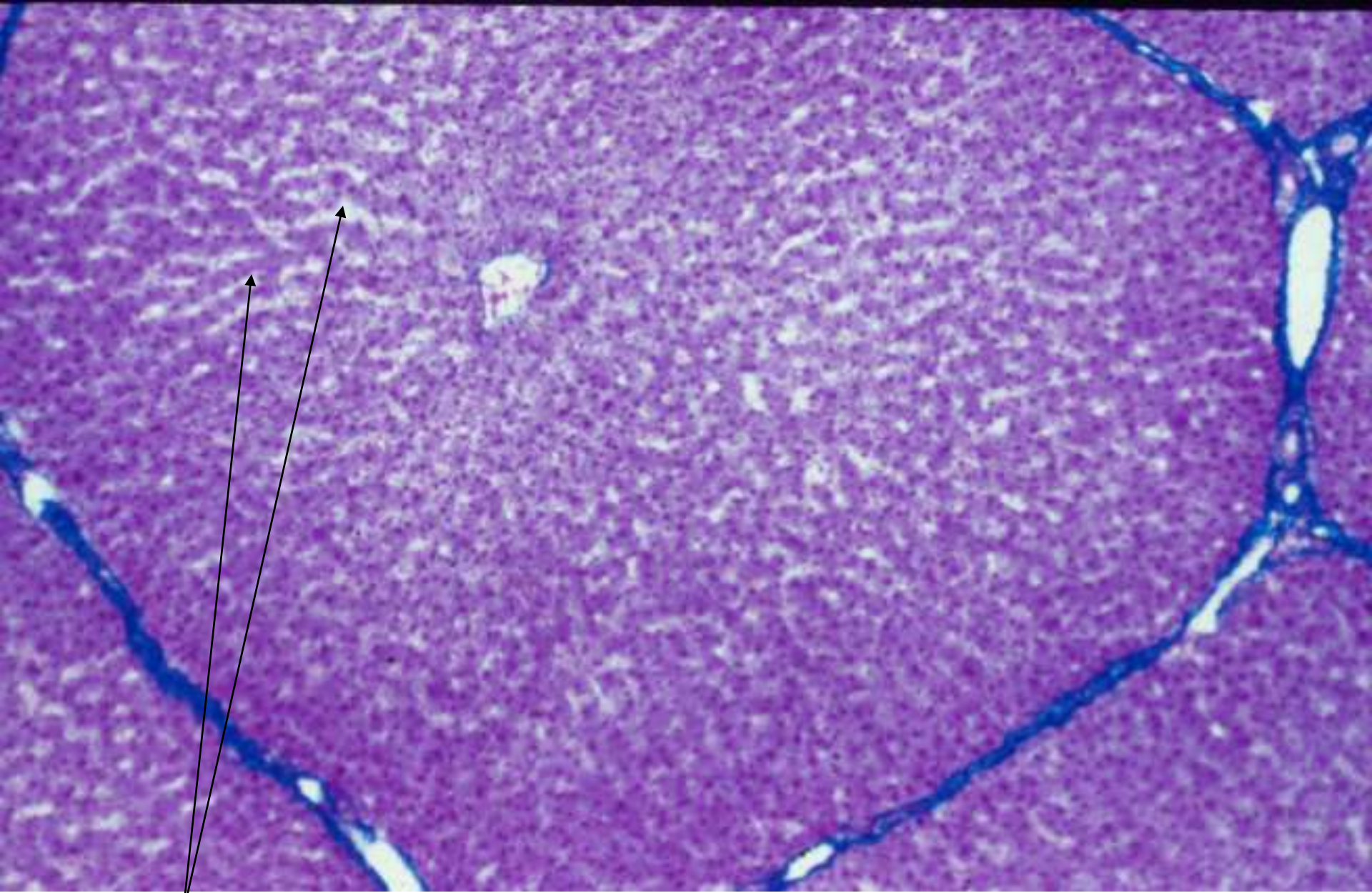




**Central vein of a liver lobule**

**Hepatocytes**





**Sinusoids  
(spaces)**

**Liver lobules showing several portal triads**







